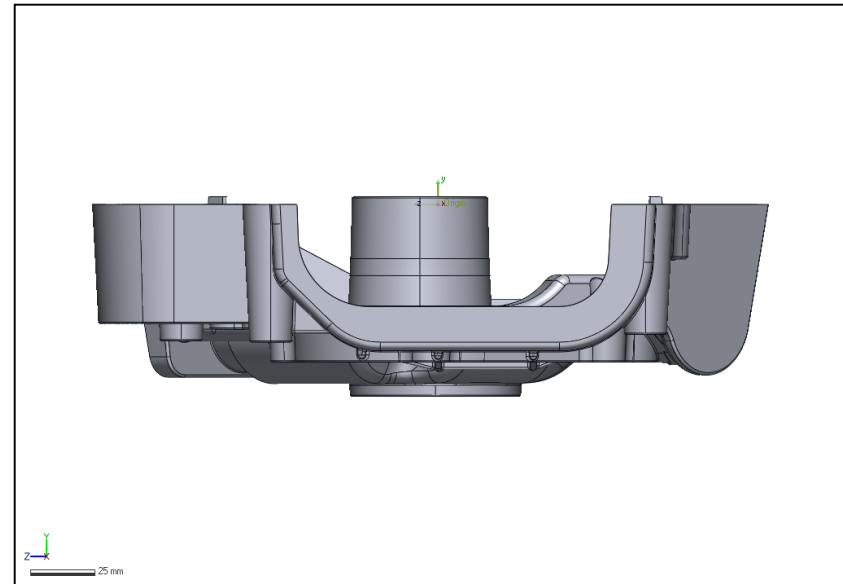
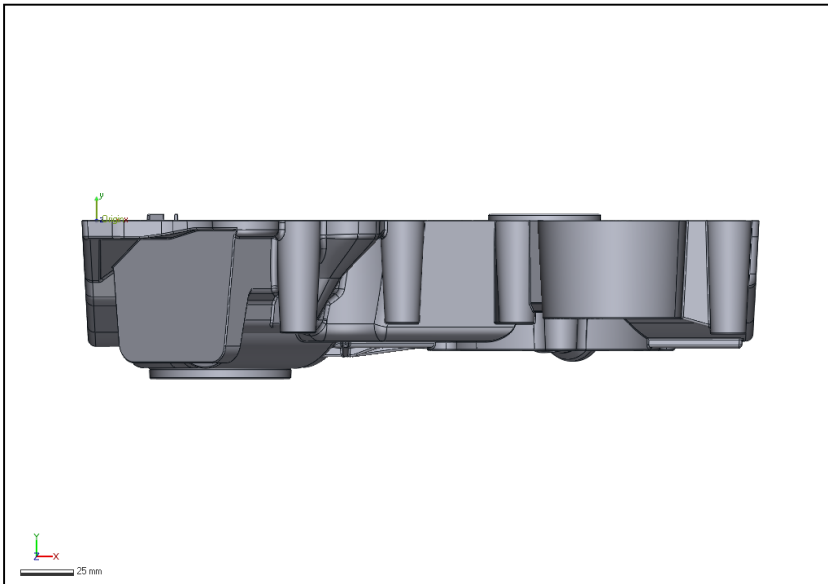
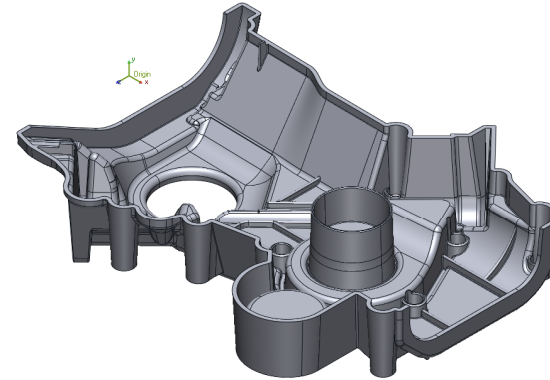
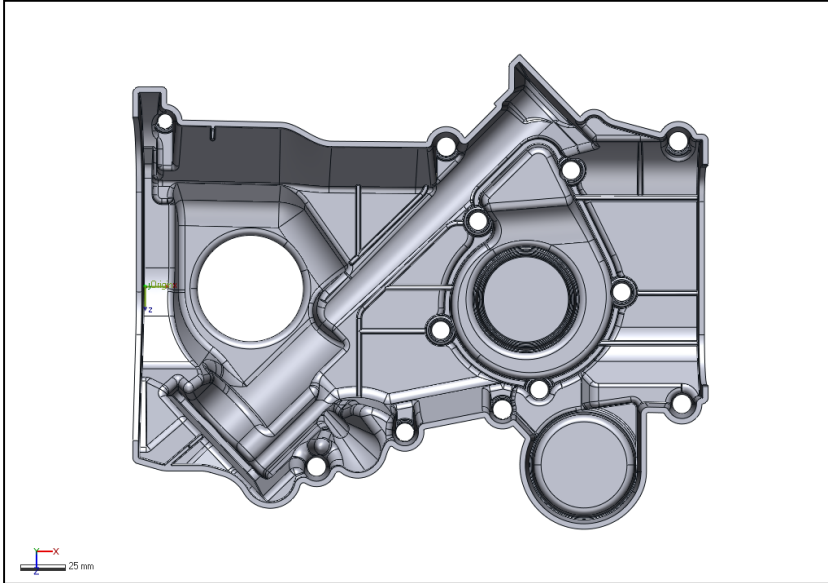


[Filename]

Product Name	Plastic case	Department	HSC	Date	Dec 21, 2017
Part Name	Loti	Inspector	Hlavoň	Unit	mm

Reference Data - HandySCAN 3D_Demo part_CAD

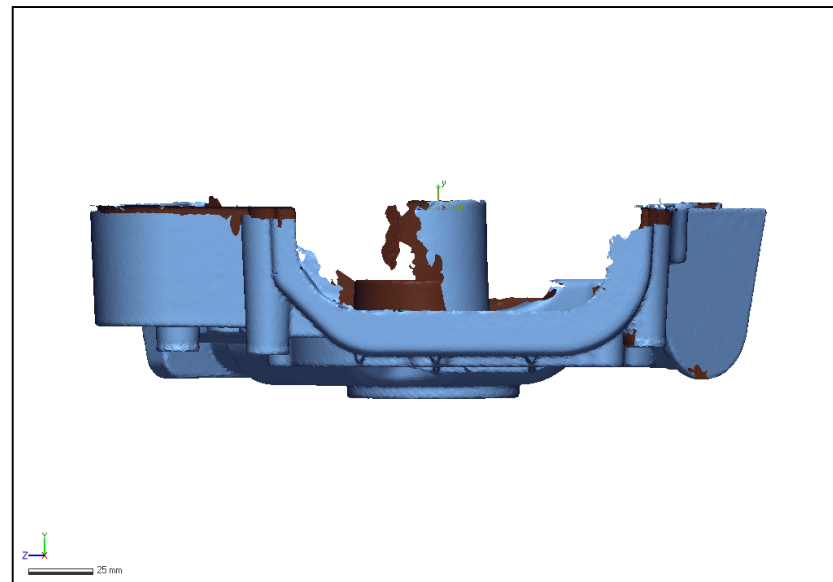
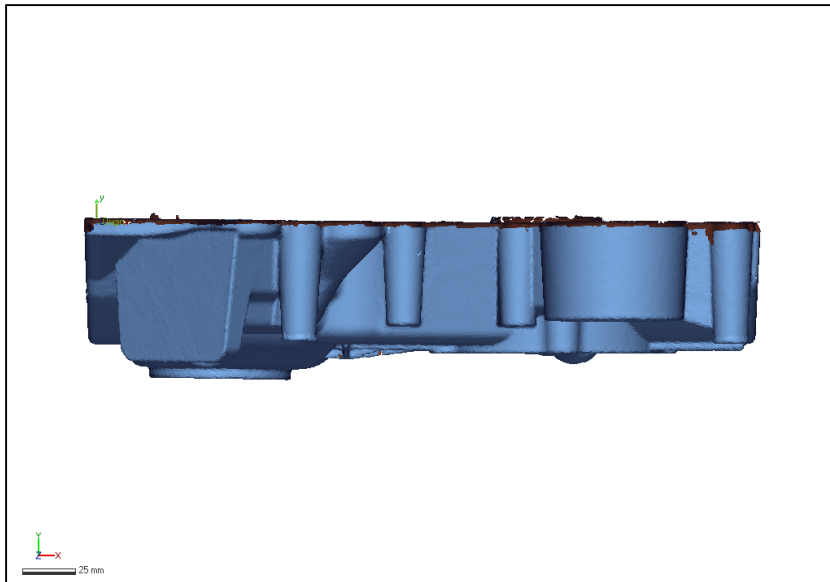
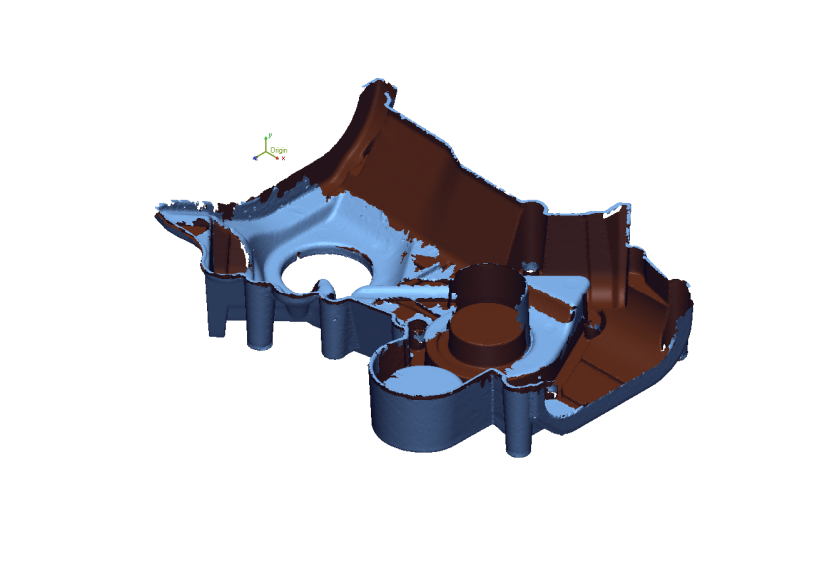
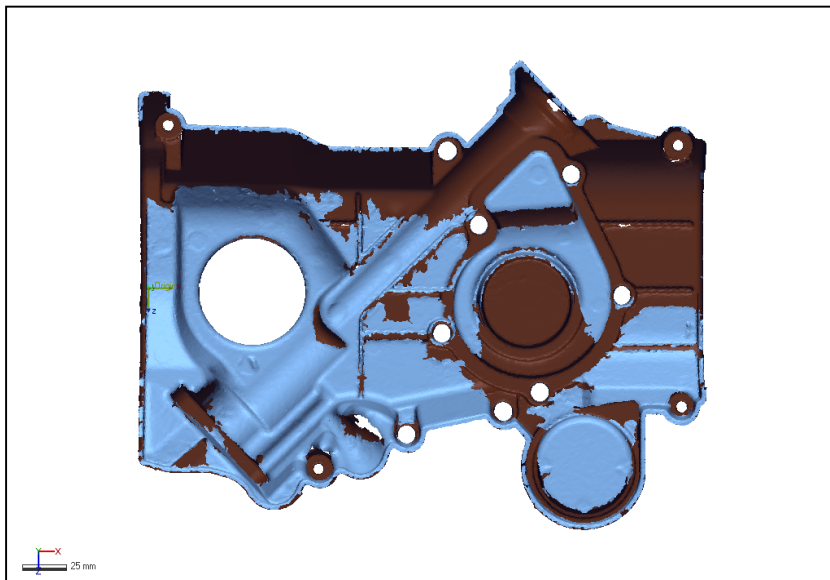


Product Name	Plastic case
Part Name	Loti

Department	HSC
Inspector	Hlavoň

Date	Dec 21, 2017
Unit	mm

Measured Data - HandySCAN part sken

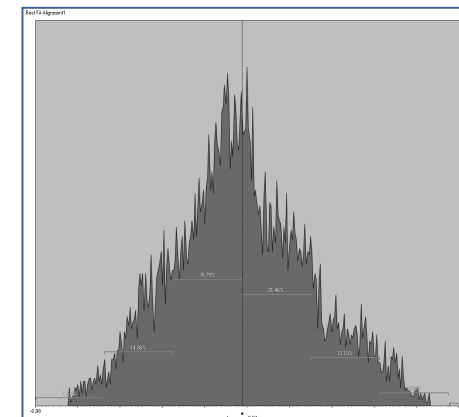
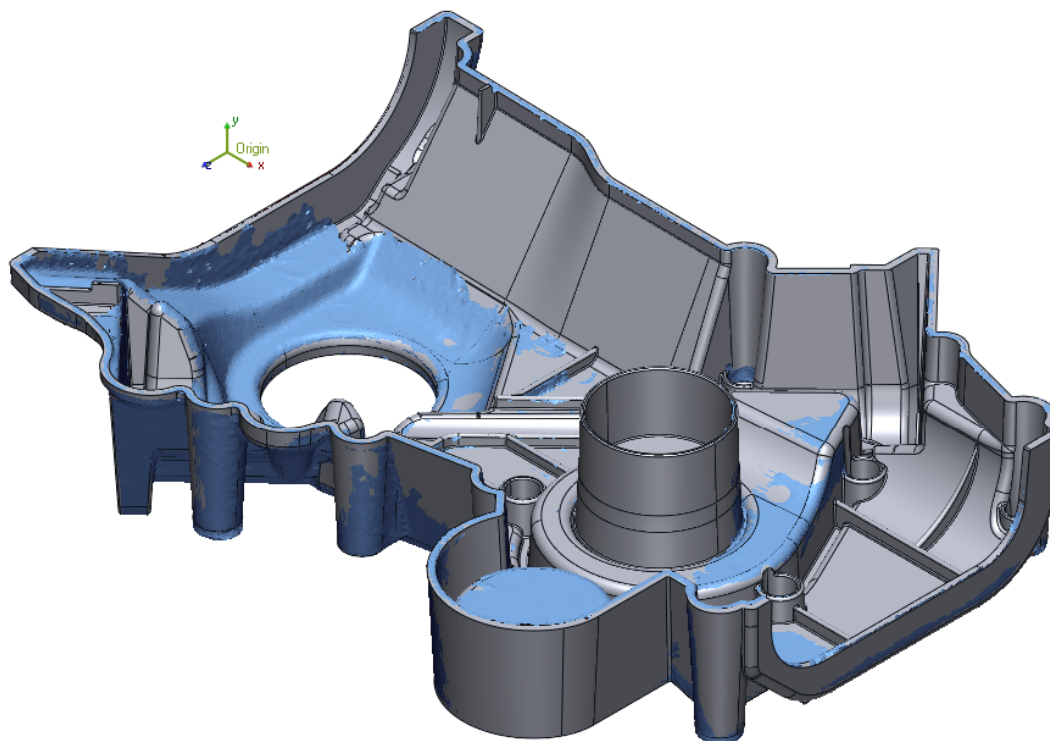


Product Name	Plastic case
Part Name	Loti

Department	HSC
Inspector	Hlavoň

Date	Dec 21, 2017
Unit	mm

Best Fit Alignment1



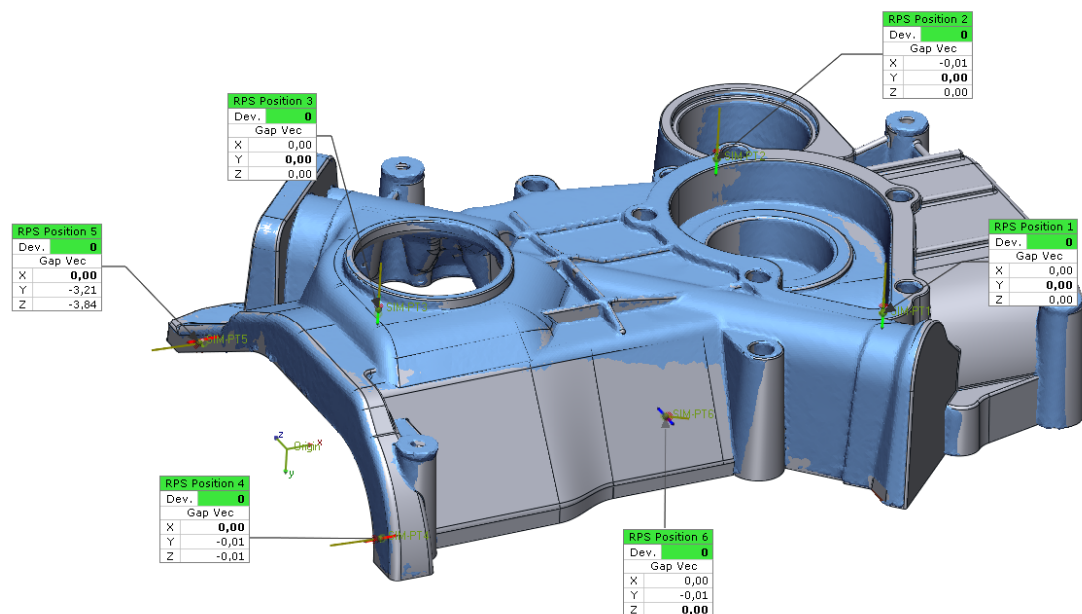
Min.	-0,82
Max.	0,82
Avg.	-0,04
RMS	0,31
Std. Dev.	0,31
Var.	0,1
+Avg.	0,25
-Avg.	-0,25

Product Name	Plastic case
Part Name	Loti

Department	HSC
Inspector	Hlavoň

Date	Dec 21, 2017
Unit	mm

RPS Alignment1



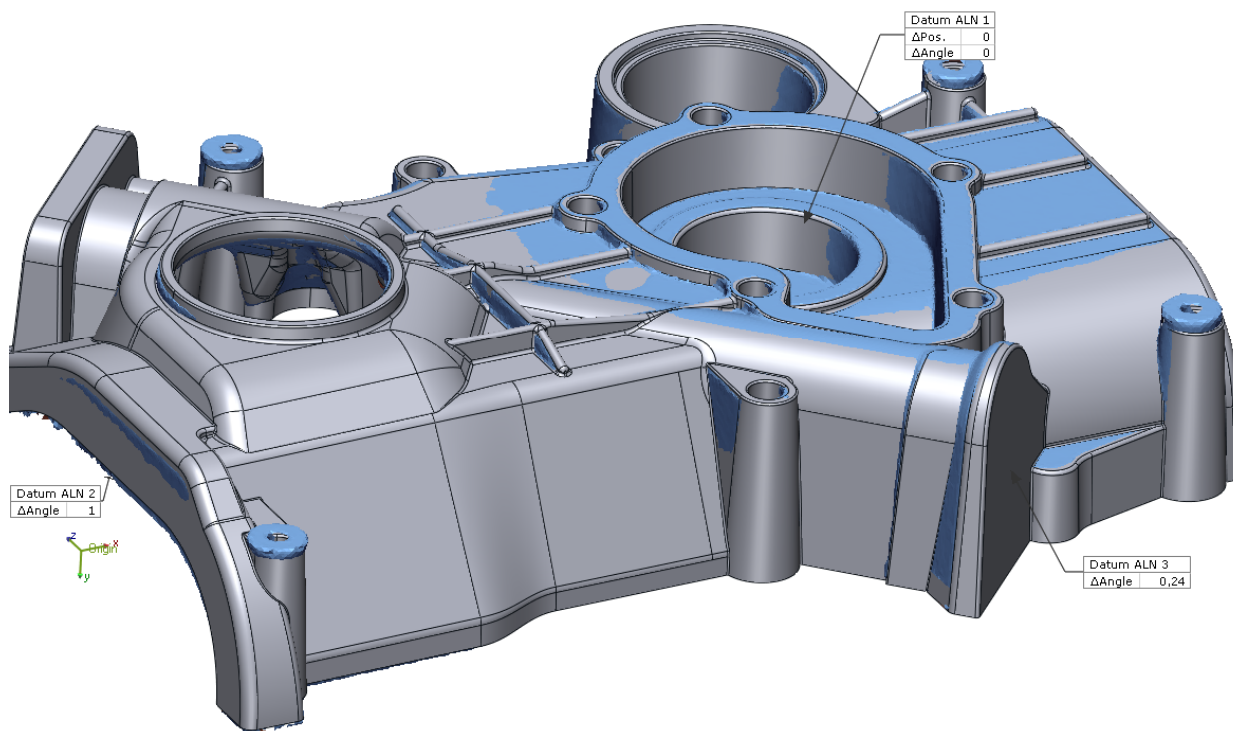
Name	Tol.	Dev.	ΔX	ΔY	ΔZ
RPS Position 1	0,1	0	0	0	0
RPS Position 2	0,1	0	-0,01	0	0
RPS Position 3	0,1	0	0	0	0
RPS Position 4	0,1	0	0	-0,01	-0,01
RPS Position 5	0,1	0	0	-3,21	-3,84
RPS Position 6	0,1	0	0	-0,01	0

Product Name	Plastic case
Part Name	Loti

Department	HSC
Inspector	Hlavoň

Date	Dec 21, 2017
Unit	mm

Datum Alignment1



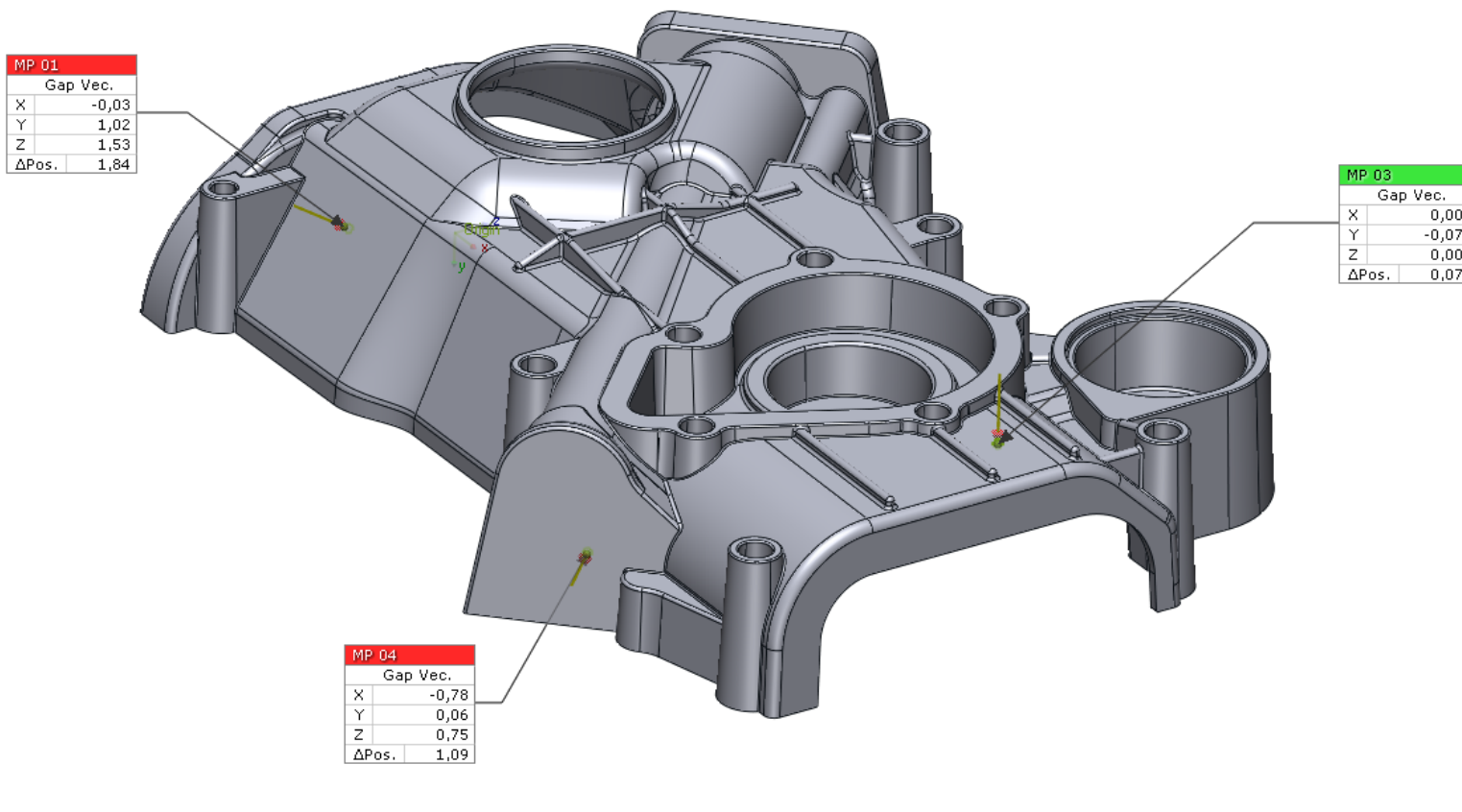
Name	Dev.	Δ Angle	Δ Pos.	Δ Pos.(x)	Δ Pos.(y)	Δ Pos.(z)
Datum ALN 1	0	0	0	0	0	0
Datum ALN 2	1	1				
Datum ALN 3	0,24	0,24				

Product Name	Plastic case
Part Name	Loti

Department	HSC
Inspector	Hlavoň

Date	Dec 21, 2017
Unit	mm

Simulated CMM Point Group



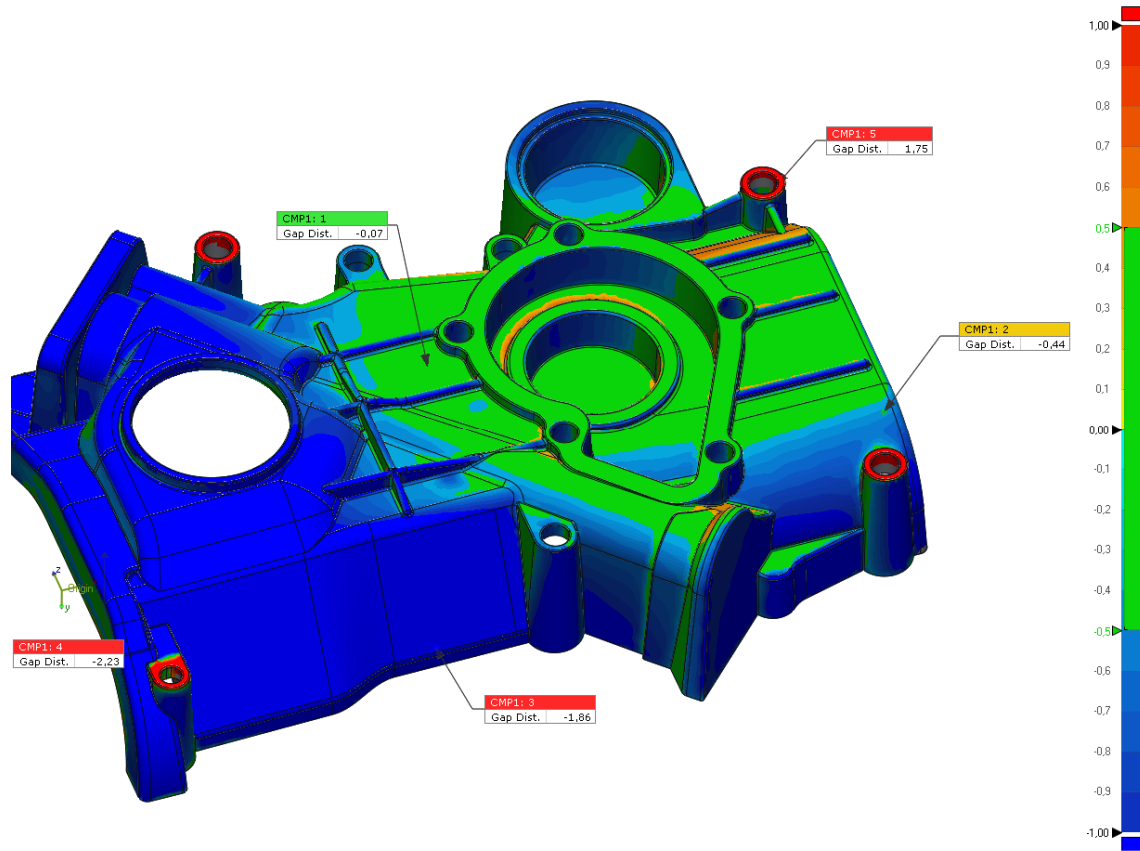
Name	Pos. Tol.	ΔPos.	Gap Vec.		
			X	Y	Z
MP 01	±0,2	1,84	-0,03	1,02	1,53
MP 03	±0,2	0,07	0	-0,07	0
MP 04	±0,2	1,09	-0,78	0,06	0,75

Product Name	Plastic case
Part Name	Loti

Department	HSC
Inspector	Hlavoň

Date	Dec 21, 2017
Unit	mm

CMP1



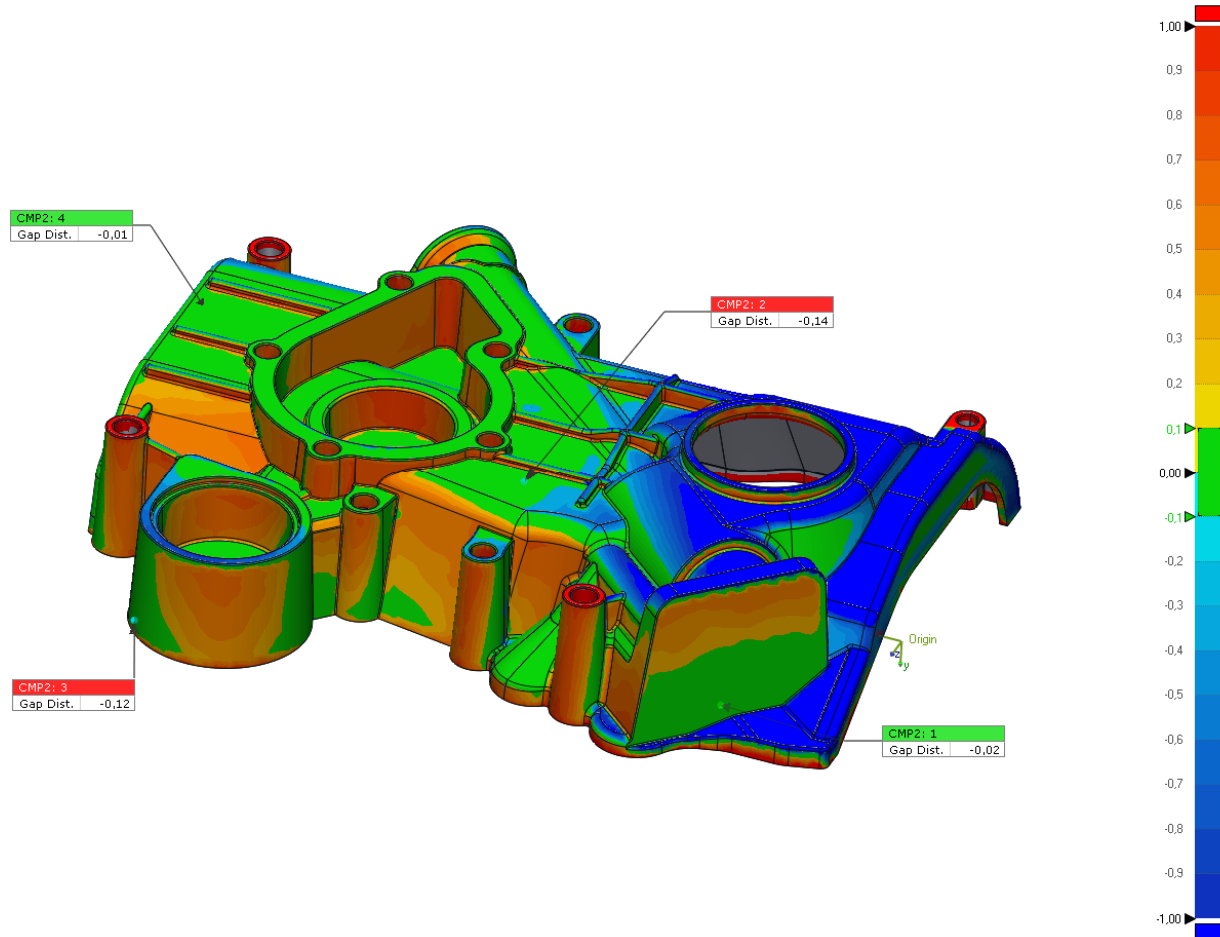
Name	Tolerance	Gap Dist.	Reference Pos.			Measured Pos.		
			X	Y	Z	X	Y	Z
CMP1: 1	±0,5	-0,07	147,6	-56,33	14,31	147,6	-56,26	14,31
CMP1: 2	±0,5	-0,44	300,73	-54,29	-58,69	300,73	-53,88	-58,55
CMP1: 3	±0,5	-1,86	118,97	-8,77	-78,36	118,96	-7,98	-76,68
CMP1: 4	±0,5	-2,23	3,66	-58,7	-36,41	3,66	-56,47	-36,41
CMP1: 5	±0,5	1,75	303,77	-53	64,4	304,07	-54,72	64,39

Product Name	Plastic case
Part Name	Loti

Department	HSC
Inspector	Hlavoň

Date	Dec 21, 2017
Unit	mm

CMP2



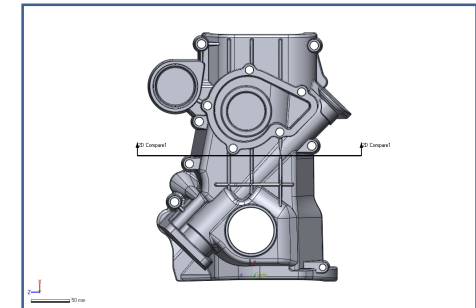
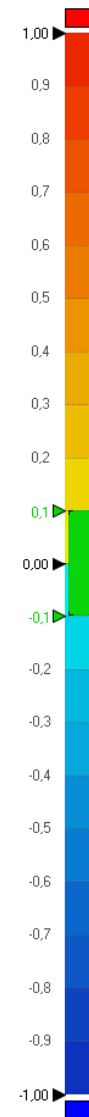
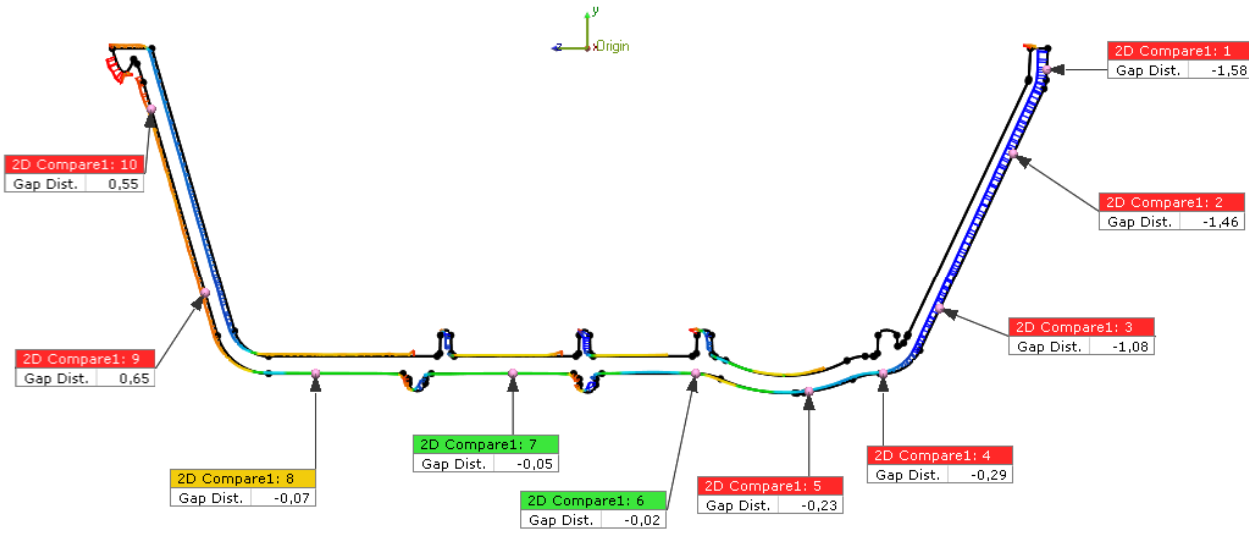
Name	Tolerance	Gap Dist.	Reference Pos.			Measured Pos.		
			X	Y	Z	X	Y	Z
CMP2: 1	±0,1	-0,02	38,85	-14,32	92,7	38,86	-14,32	92,69
CMP2: 2	±0,1	-0,14	142,41	-56,33	40,25	142,41	-56,18	40,25
CMP2: 3	±0,1	-0,12	268,32	-5,21	121,25	268,23	-5,2	121,17
CMP2: 4	±0,1	-0,01	299,03	-56,33	-22,41	299,03	-56,31	-22,41

Product Name	Plastic case
Part Name	Loti

Department	HSC
Inspector	Hlavoň

Date	Dec 21, 2017
Unit	mm

2D Compare1



Min.	-2,22
Max.	2,02
Avg.	-0,17
RMS	0,71
Std. Dev.	0,69
Var.	0,48
+Avg.	0,42
-Avg.	-0,64
In Tol.(%)	17,2
Out Tol.(%)	82,8
Over Tol.(%)	39,33
Under Tol.(%)	43,47

Product Name	Plastic case
Part Name	Loti

Department	HSC
Inspector	Hlavoň

Date	Dec 21, 2017
Unit	mm

Name	Min.	Max.	Avg.	RMS	Std. Dev.	Var.	+Avg.	-Avg.
2D Compare1	-2,22	2,02	-0,17	0,71	0,69	0,48	0,42	-0,64

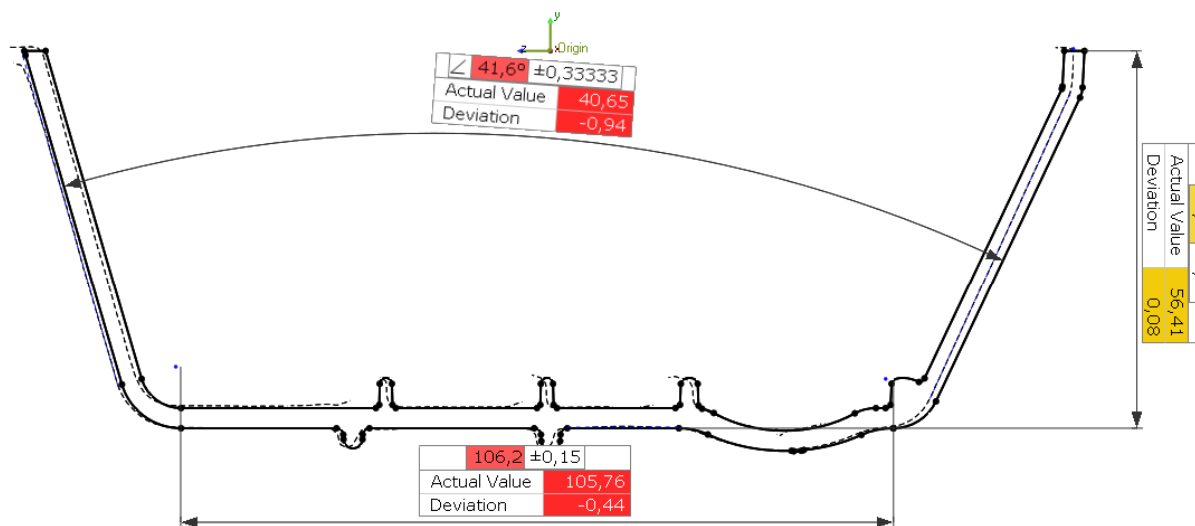
Name	Tolerance	Gap Dist.	Reference Pos.		Measured Pos.	
			X	Y	X	Y
2D Compare1: 1	±0,1	-1,58	79,4	-3,67	77,82	-3,59
2D Compare1: 2	±0,1	-1,46	73,59	-18,21	72,28	-17,59
2D Compare1: 3	±0,1	-1,08	60,87	-45,12	59,89	-44,66
2D Compare1: 4	±0,1	-0,29	51,13	-56,33	51,12	-56,04
2D Compare1: 5	±0,1	-0,23	38,31	-59,44	38,28	-59,22
2D Compare1: 6	±0,1	-0,02	18,7	-56,33	18,7	-56,3
2D Compare1: 7	±0,1	-0,05	-12,86	-56,33	-12,86	-56,28
2D Compare1: 8	±0,1	-0,07	-46,98	-56,33	-46,98	-56,26
2D Compare1: 9	±0,1	0,65	-66,09	-42,35	-66,71	-42,53
2D Compare1: 10	±0,1	0,55	-75,4	-10,49	-75,93	-10,65
Min.		-1,58	-75,40	-59,44	-75,93	-59,22
Max.		0,65	79,40	-3,67	77,82	-3,59
Avg.		-0,36	12,07	-40,46	11,56	-40,31

Product Name	Plastic case
Part Name	Loti

Department	HSC
Inspector	Hlavoň

Date	Dec 21, 2017
Unit	mm

Cross Section1



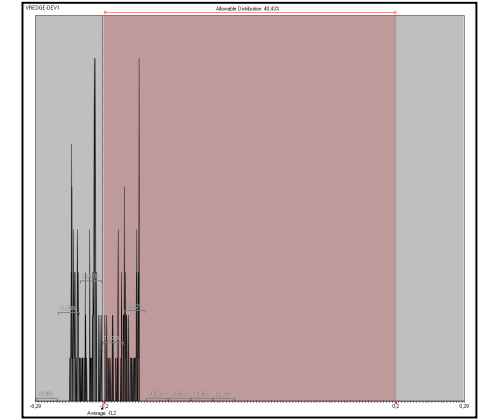
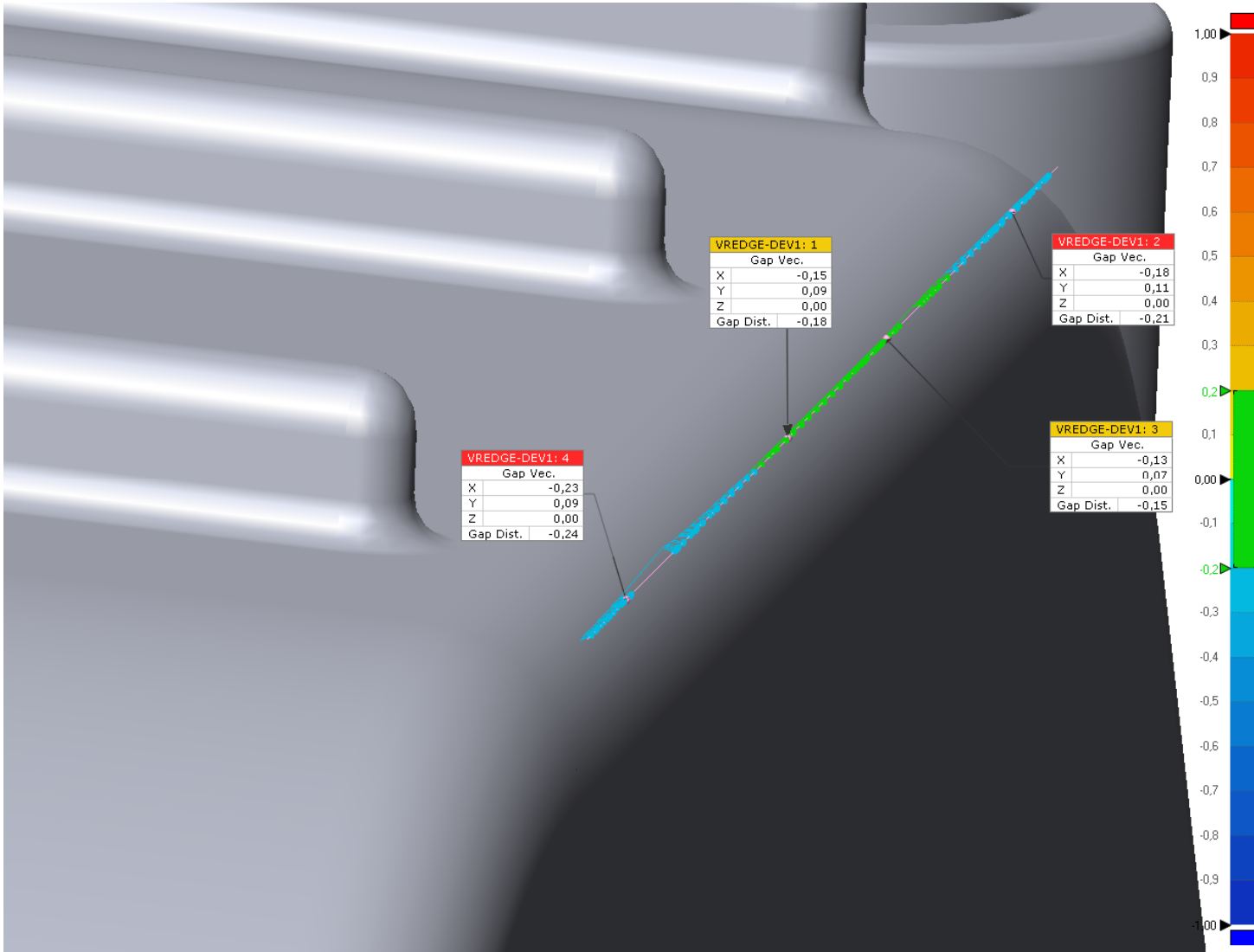
Name	Result Name	Reference Value	Tolerance	Actual Value	Deviation
Angular Dim.2	Result Data - 1	41,6	±0,33333	40,65	-0,94
Linear Dim.3	Result Data - 1	106,2	±0,15	105,76	-0,44
Linear Dim.4	Result Data - 1	56,33	±0,15	56,41	0,08

Product Name	Plastic case
Part Name	Loti

Department	HSC
Inspector	Hlavoň

Date	Dec 21, 2017
Unit	mm

VREDGE-DEV1



Min.	-0,25
Max.	-0,15
Avg.	-0,2
RMS	0,21
Std. Dev.	0,03
Var.	0
-Avg.	-0,2
In Tol.(%)	40,43
Out Tol.(%)	59,57
Over Tol.(%)	0
Under Tol.(%)	59,57

Product Name	Plastic case
Part Name	Loti

Department	HSC
Inspector	Hlavoň

Date	Dec 21, 2017
Unit	mm

Name	Min.	Max.	Avg.	RMS	Std. Dev.	Var.	+Avg.	-Avg.
VREDGE-DEV1	-0,25	-0,15	-0,2	0,21	0,03	0		-0,2

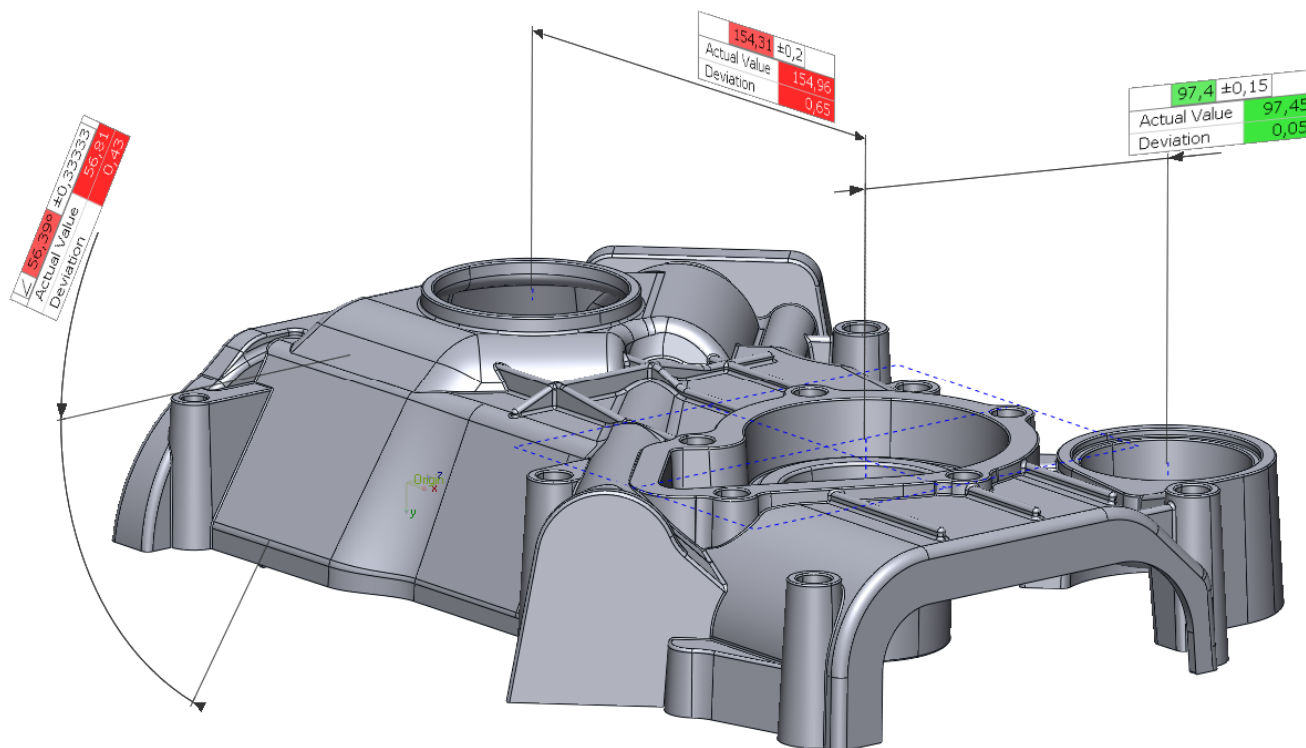
Name	Result Name	Tolerance	Gap Dist.	Reference Pos.			Measured Pos.		
				X	Y	Z	X	Y	Z
VREDGE-DEV1: 1	Result Data - 1	±0,2	-0,18	307,5	-56,33	-17,25	307,35	-56,23	-17,25
VREDGE-DEV1: 2	Result Data - 1	±0,2	-0,21	307,5	-56,33	15,68	307,32	-56,22	15,68
VREDGE-DEV1: 3	Result Data - 1	±0,2	-0,15	307,5	-56,33	-2,77	307,37	-56,25	-2,77
VREDGE-DEV1: 4	Result Data - 1	±0,2	-0,24	307,5	-56,33	-40,94	307,27	-56,23	-40,94
Min.			-0,24	307,50	-56,33	-40,94	307,27	-56,25	-40,94
Max.			-0,15	307,50	-56,33	15,68	307,37	-56,22	15,68

Product Name	Plastic case
Part Name	Loti

Department	HSC
Inspector	Hlavoň

Date	Dec 21, 2017
Unit	mm

Group1



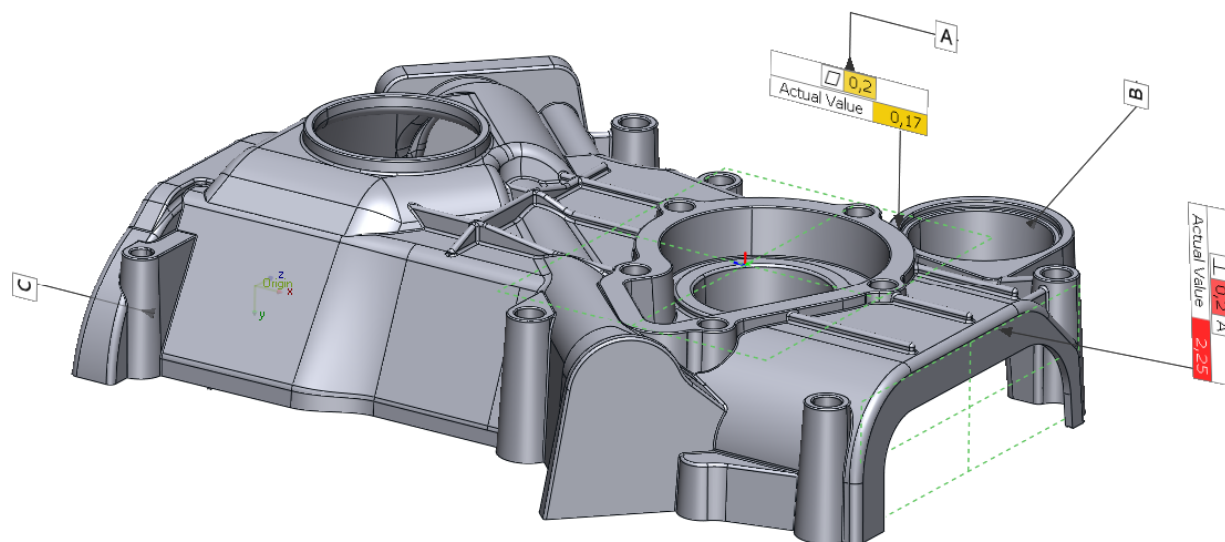
Name	Reference Value	Actual Value	Tolerance	Deviation
Angular Dim.1	56,39	56,81	±0,33333	0,43
Linear Dim.1	154,31	154,96	±0,2	0,65
Linear Dim.2	97,4	97,45	±0,15	0,05

Product Name	Plastic case
Part Name	Loti

Department	HSC
Inspector	Hlavoň

Date	Dec 21, 2017
Unit	mm

Group2



Name	Actual Value	Tolerance	Bonus Tolerance	# Of Points
Flatness1	0,17	0,2	0	1804
Perpendicularity1	2,25	0,2	0	1858

Product Name	Plastic case
Part Name	Loti

Department	HSC
Inspector	Hlavoň

Date	Dec 21, 2017
Unit	mm